

COVID-19 Weekly Update – 14th September 2020

Data correct as of 11th September but subject to revision

Compiled and published by Hampshire Public Health

14th September 2020



This report provides information on the COVID-19 pandemic in Hampshire and includes:

- COVID -19 infections – the total numbers of cases, rates within Hampshire's districts and overall picture across England
- Deaths - total deaths, which also includes those extra deaths above the number we would normally expect in Hampshire, over recent months



Infections – daily COVID-19 cases in Hampshire showing how the epidemic has progressed over time – the ‘epidemic curve’

Overall, a slow increase in the number of infections from a low point at the end of June which may be levelling off

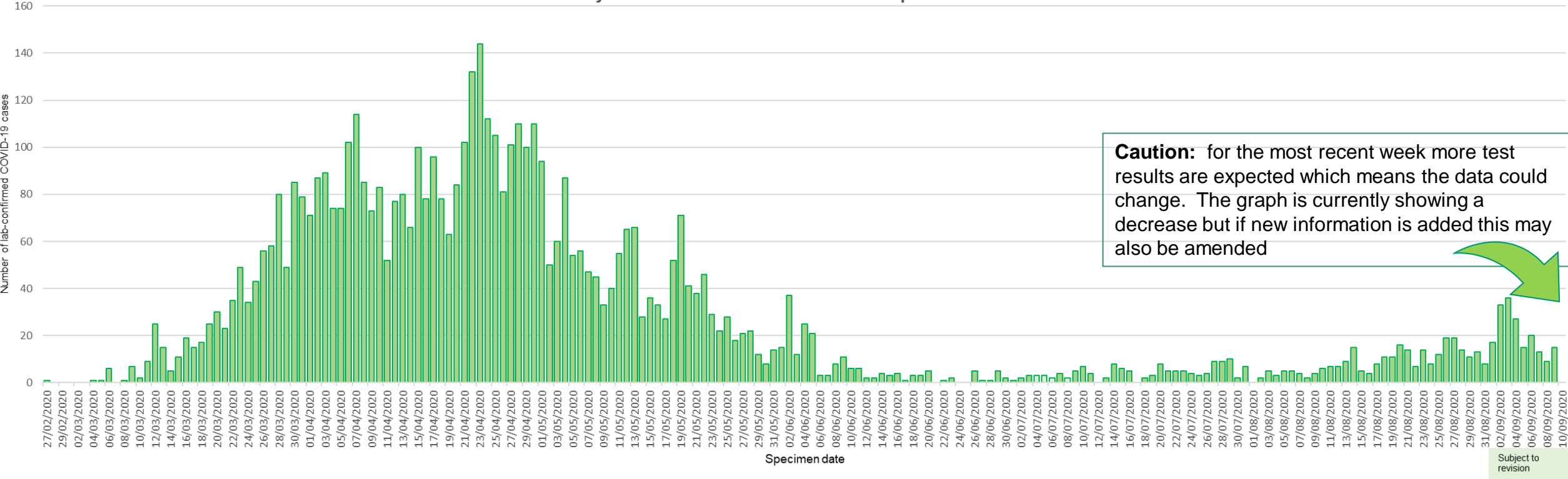
Total number of COVID-19 cases



5,579

Data only includes those cases which have tested positive

Daily lab-confirmed cases across Hampshire



Source: [PHE dashboard](#) (Last updated on 11th September 2020)

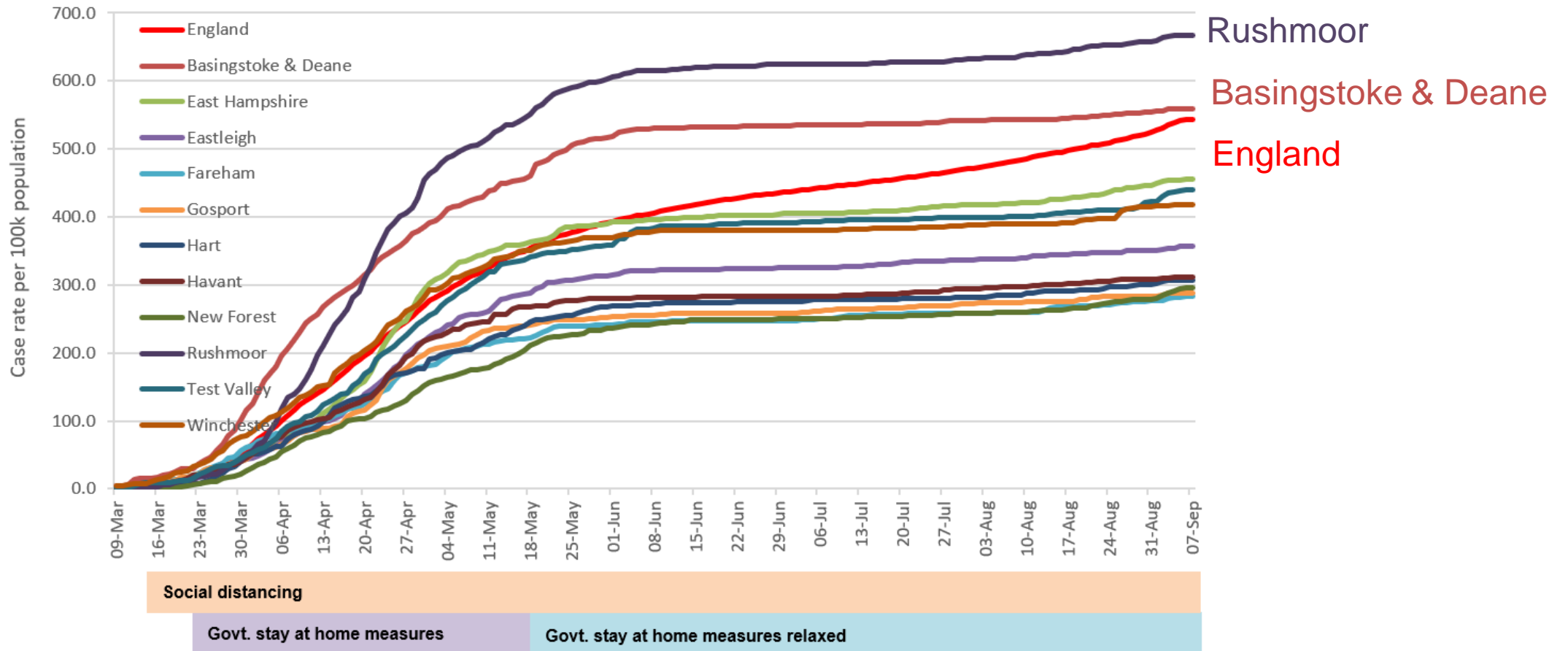
The data now includes all cases, those which have been tested by NHS/PHE laboratories and by the Government's commercial testing partners



Infection rates – Total cases per 100,000 people across Hampshire Districts

- The trend in the total figures shows that the infection is slowly rising across Hampshire
- The highest infection rates have been in Rushmoor and Basingstoke & Deane districts, where these have been greater than the average infection rates for England

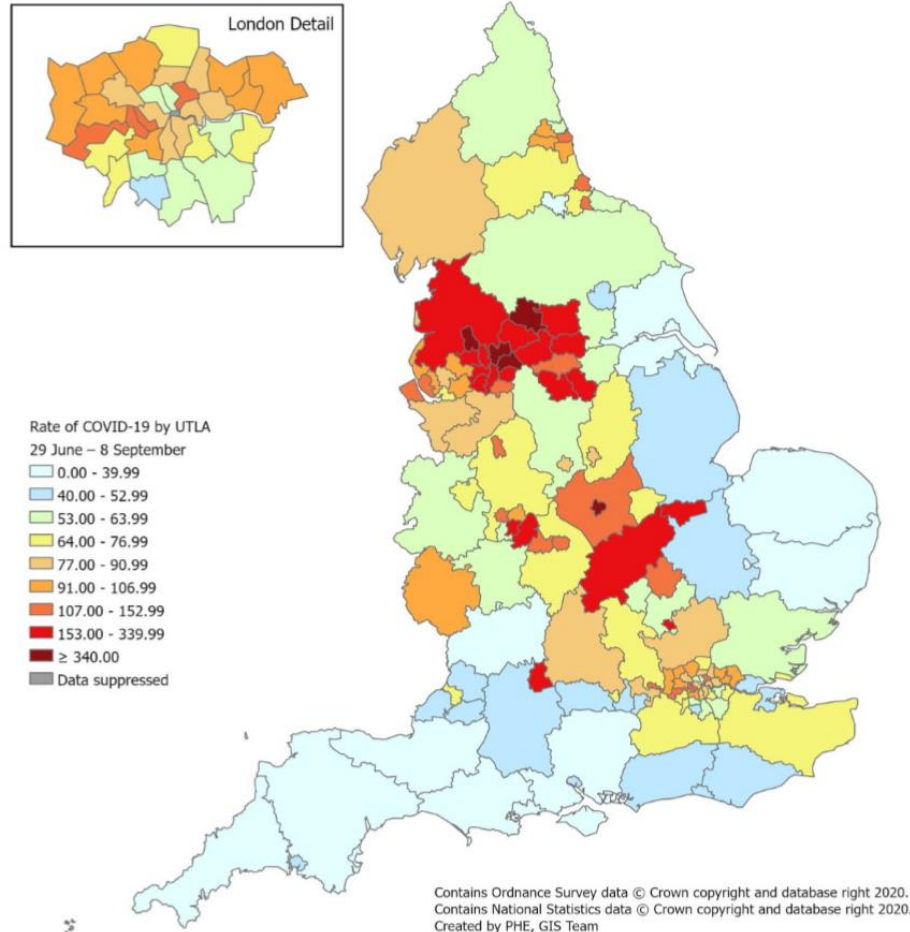
COVID 19 - Case rate per 100k population: Hampshire districts and England



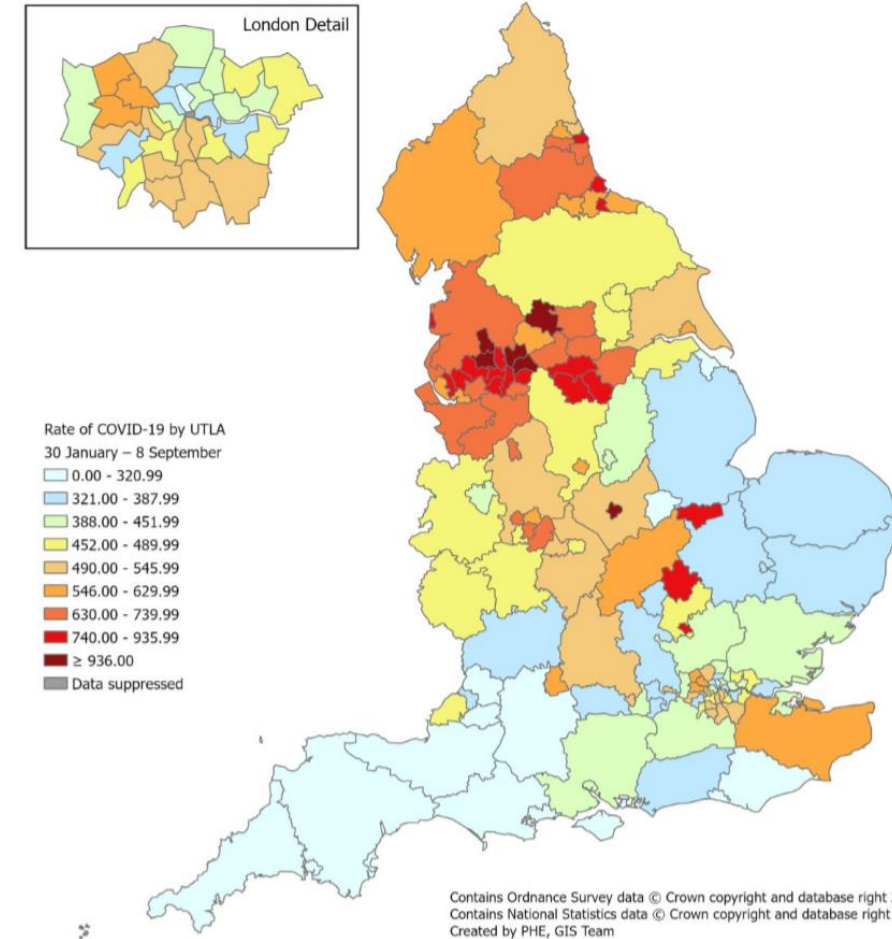
Infections- number of cases of COVID-19 per 100,000 people across England

The following local authorities have been included in the watchlist following the weekly Local Action Committee meeting as areas of intervention: Bolton, Bradford, Oldham, Salford, Blackburn with Darwen, Preston, Pendle, Rochdale, Tameside, Manchester, Birmingham, Bury, Leicester, Kirklees, Solihull, Calderdale, Trafford and Sandwell.

Weekly rate, week 37



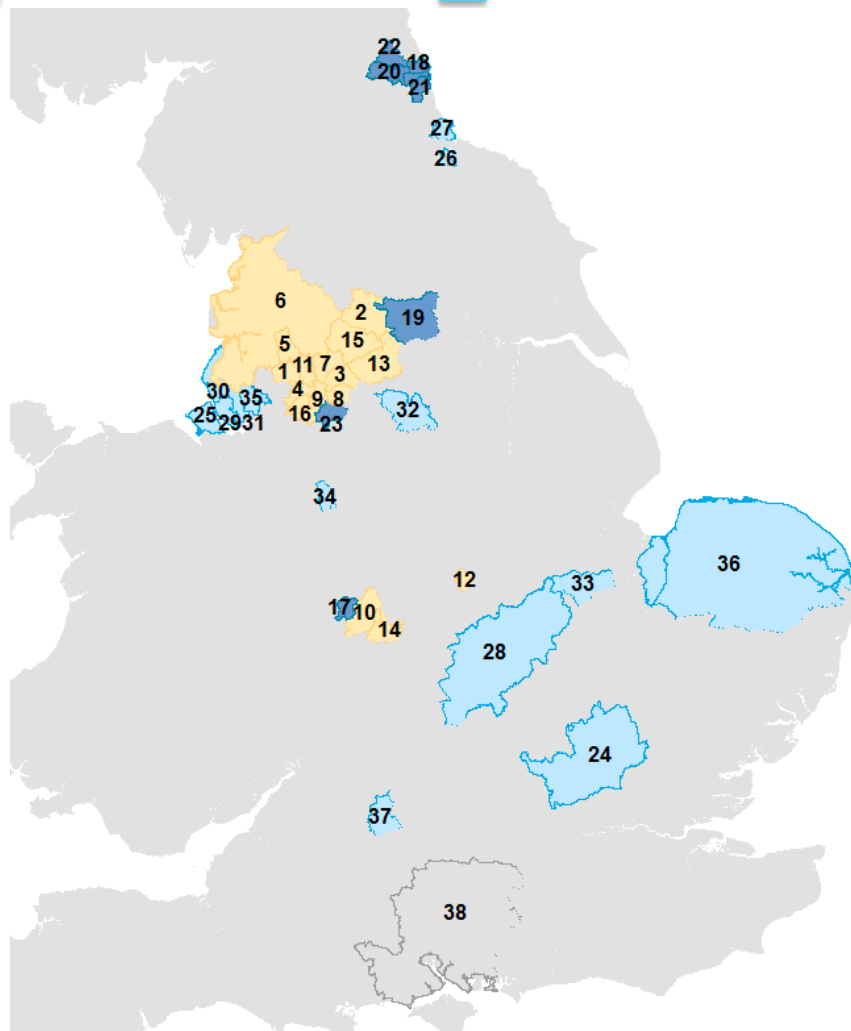
Cumulative rate



Areas on the Coronavirus Watchlist

County and Unitary Authorities in England that contain districts with a level of support– Updated 11th September 2020

Area of Intervention
 Area of Concern
 Enhanced Support
 Hampshire Districts (for location reference only)



Number	County/Unitary Authority	Status
1	Bolton	Intervention
2	Bradford	Intervention
3	Oldham	Intervention
4	Salford	Intervention
5	Blackburn with Darwen	Intervention
6	Lancashire	Intervention
7	Rochdale	Intervention
8	Tameside	Intervention
9	Manchester	Intervention
10	Birmingham	Intervention
11	Bury	Intervention
12	Leicester	Intervention
13	Kirklees	Intervention
14	Solihull	Intervention
15	Calderdale	Intervention
16	Trafford	Intervention
17	Sandwell	Enhanced Support
18	South Tyneside	Enhanced Support
19	Leeds	Enhanced Support
20	Gateshead	Enhanced Support
21	Sunderland	Enhanced Support
22	Newcastle upon Tyne	Enhanced Support
23	Stockport	Enhanced Support
24	Hertfordshire	Concern
25	Wirral	Concern
26	Middlesbrough	Concern
27	Hartlepool	Concern
28	Northamptonshire	Concern
29	Liverpool	Concern
30	Sefton	Concern
31	Knowsley	Concern
32	Sheffield	Concern
33	Peterborough	Concern
34	Stoke-on-Trent	Concern
35	St. Helens	Concern
36	Norfolk	Concern
37	Swindon	Concern
38	Hampshire	Reference only

Whilst the Hampshire weekly incidence rate is relatively low at 8.36 per 100,000, it reflects a general trend towards larger numbers of cases and the need to remain vigilant

Table 1: Local Authority watchlist areas

Lower Tier Local Authority	Individuals tested per day per 100,000 population (7 day moving average)	Trend	Incidence per 100,000 population (weekly)	Trend	Control Framework Watchlist Status - week beginning 1 September	Change in Watchlist Status from previous week	Area with household mixing prohibited?
Bolton*	185.0	↘	113.9	↘	Intervention	↔	YES
Bradford†	129.0	↘	12.2	↘	Intervention	↔	YES
Oldham*	86.1	↘	66.6	↘	Intervention	↔	YES
Salford*	130.1	↘	62.8	↘	Intervention	↔	YES
Blackburn with Darwen‡	139.2	↘	65.0	↘	Intervention	↔	YES
Bury	104.1	↘	59.9	↘	Intervention	↔	YES
Leeds	199.0	↘	18.0	↘	Intervention	↔	YES
Rochdale*	85.0	↘	57.7	↘	Intervention	↔	YES
Tameside*	84.5	↘	16.8	↘	Intervention	↔	YES
Manchester*	133.1	↘	55.9	↘	Intervention	↔	YES
Birmingham	184.1	↘	50.8	↘	Intervention	↔	YES
Brent	132.2	↘	48.8	↘	Intervention	↔	YES
Liverpool	124.0	↘	43.1	↘	Intervention	↔	YES
Kirkcaldy‡	109.0	↘	36.9	↘	Intervention	↔	YES
Sunderland	113.9	↘	34.9	↘	Intervention	↔	YES
Calderdale†	118.6	↘	34.0	↘	Intervention	↔	YES
Trafford†	144.0	↘	33.0	↘	Intervention	↔	YES
Stockport	99.8	↘	22.8	↘	Intervention	↔	YES
Warrandale	222.5	↘	80.4	↘	Enhanced Support	↔	NO
Bradley	107.8	↘	57.6	↘	Enhanced Support	↔	NO
South Tyneside	109.1	↘	19.8	↘	Enhanced Support	↔	NO
Leeds	136.8	↘	47.0	↘	Enhanced Support	↔	NO
Hyndburn*	203.1	↘	42.1	↘	Enhanced Support	↔	NO
Gateshead	123.3	↘	40.1	↘	Enhanced Support	↔	NO
Stockport	129.3	↘	32.4	↘	Enhanced Support	↔	NO
Newcastle upon Tyne	116.3	↘	28.0	↘	Enhanced Support	↔	NO
Stockport*	120.8	↘	20.0	↘	Enhanced Support	↔	NO
Hull‡	160.5	↘	13.7	↘	Concern	↔	NO
Wirral	181.4	↘	43.6	↘	Concern	↔	NO
Middlesbrough	144.5	↘	42.0	↘	Concern	↔	NO
Hartlepool	88.8	↘	28.6	↘	Concern	↔	NO
Crabby	242.2	↘	35.0	↘	Concern	↔	NO
Liverpool	126.8	↘	31.1	↘	Concern	↔	NO
Sutton	126.7	↘	30.9	↘	Concern	↔	NO
Knowsley	129.7	↘	30.1	↘	Concern	↔	NO
Sheffield	114.9	↘	28.1	↘	Concern	↔	NO
Peterborough	99.1	↘	27.9	↘	Concern	↔	NO
Northampton*	91.8	↘	25.8	↘	Concern	↔	NO
Stoke-on-Trent	124.5	↘	25.0	↘	Concern	↔	NO
St. Helens	186.7	↘	23.0	↘	Concern	↔	NO
Great Tamworth	129.9	↘	23.1	↘	Concern	↔	NO
Northwich	121.6	↘	20.1	↘	Concern	↔	NO
Swindon	100.9	↘	16.7	↘	Concern	↔	NO
Bradford‡	118.8	↘	16.5	↘	Concern	↔	NO
South Norfolk	103.8	↘	9.8	↘	Concern	↔	NO
King's Lynn and West Norfolk	83.4	↘	4.9	↘	Concern	↔	NO
Bradford§	99.8	↘	3.1	↘	Concern	↔	NO
North Norfolk§	89.8	↘	2.9	↘	Concern	↔	NO
ENGLAND	79.1	↘	19.7	↘			

Data for specimens taken between 28 August and 3 September as extracted on 8 September
 Trend arrow indicates whether there has been an increase, decrease or no change between this week and last week (specimens taken between 21 August and 27 August)
 *Local authority is part of an area in which overall infection rates are high, with household transmission a key infection pathway.
 ‡ Within these Local Authority the interventions have been restricted to some wards
 † Northampton's increase in incidence is almost solely down relates to a workplace outbreak at the Green-core Factory
 § These Local Authorities are within Norfolk and relate almost solely to a workplace outbreak at Banham Poultry Farm.

Deaths

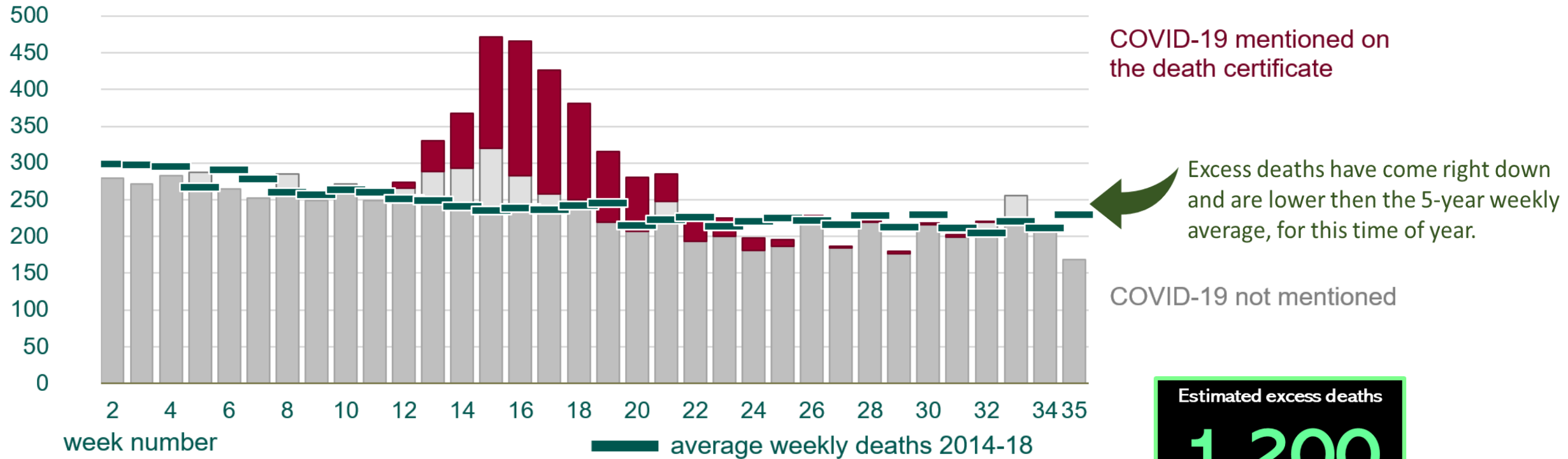
Deaths due to COVID-19 are continuing to decline, - the latest weekly figure is **0**
There have been no excess (extra) deaths above the number we would usually see at this time of year.

Total number of COVID-19 deaths



1,063

All deaths in 2020 by week, with proportion where COVID-19 is mentioned



Estimated excess deaths

1,200

ONS - Deaths registered weekly in England and Wales, provisional

Source: PHE ONS- Deaths registered weekly in England and Wales, provisional

