



Hampshire  
County Council

Children and Young People Select Committee  
28<sup>th</sup> September 2020

# Children and Families

Stuart Ashley

# Agenda:

## 1. Our approach

- Phases, oversight and data

## 2. What we did

- Children in Care, Foster Carers and Residential
- Partners
- What next?

## 3. Education update

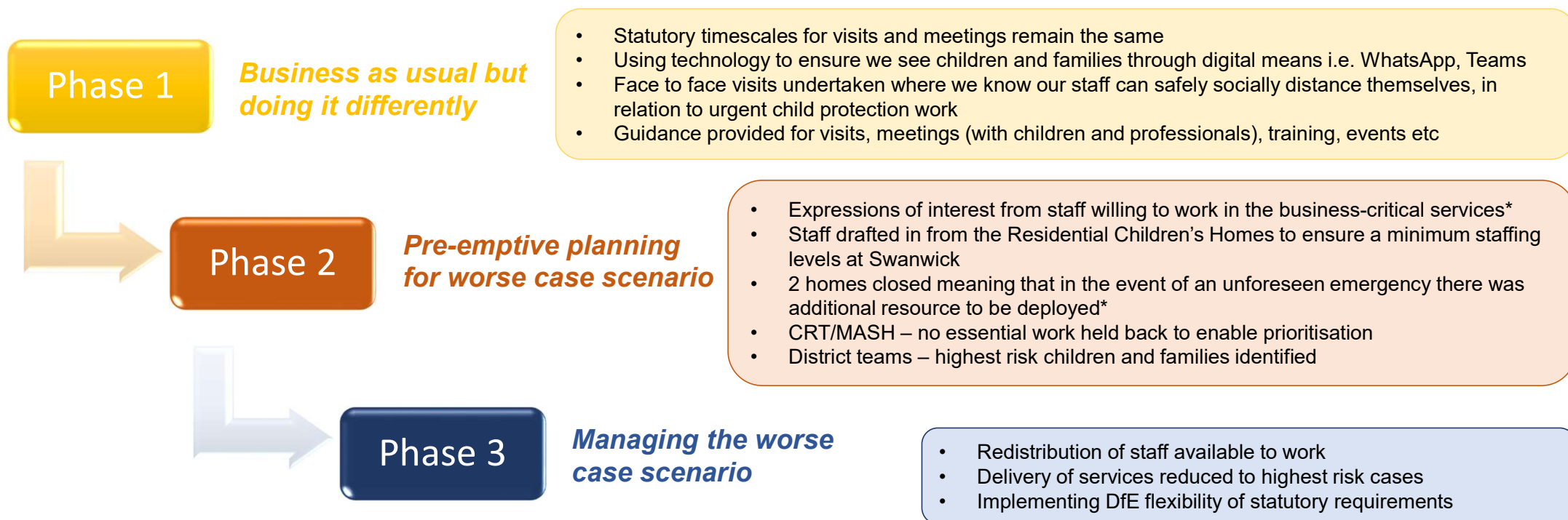
- GCSE and A Levels

## 4. HtST update

## 5. Early Years update

# Our approach over the last few months:

As part of our contingency planning we developed a phased approach, with each phase based on having fewer staff available to work should the situation worsen



\*We remained in Phase 1 throughout lockdown and actioned some elements of Phase 2\*

# Data:

Measure		Apr-19	May-19	Jun-19	Jul-19	Aug-19	Apr-20	May-20	Jun-20	Jul-20	Aug-20
Total Referrals		2825	3096	3178	3649	2871	2671	3073	4007	3949	3258
No of Referrals progressed to Assessment		1563	1602	1681	2000	1556	1180	1411	1888	1936	1710
Assessments completed (within 45 working days of referral)	Number	1097	1045	1003	1364	1100	1112	1007	1201	1501	1147
	Timeliness	92.3%	93.1%	90.4%	94.1%	88.7%	90.3%	93.0%	95.8%	96.3%	96.1%
ICPCs		91	104	129	188	100	160	162	140	164	101
RCPCs		285	303	269	260	109	194	244	276	329	137

Across June and Aug 2020, we completed 30211 visits (Assessment, CIN, CP, CLA, LC)

	% of Visits Undertaken Virtually	% of Visits Undertaken in Person
April	53%	47%
May	45%	55%
June	39%	61%
July	33%	67%
August	27%	73%

**Whilst there was some reduction in referrals and assessments during April, by the end of May we were back to normal levels and since June have been 15 to 20% above normal**

We have seen an increase of c140 children subject to a Child Protection Plan since April. The level of complexity within families that we are assessing has increased as a result of needs being magnified by COVID

# Vulnerable children attending school

A feature of our response to Covid 19 has been the excellent joint working between children's social care and education, schools and colleges to ensure as many vulnerable children as possible were able to attend school

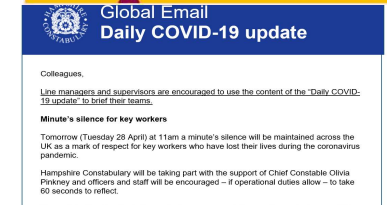
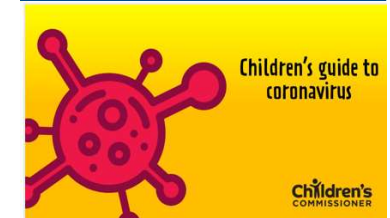
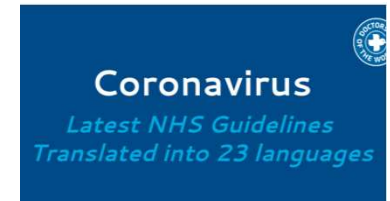
- Identification of vulnerable children cohort
- Children's Social Care visits included discussion on school attendance and support to attend
- Risks assessments completed on every vulnerable child not attending school
- Impact- by end of term 53% of vulnerable children attending school, including 57% of those subject to child protection planning and 57% of children in care.



# Partners

We are continuing with constant dialogue with our partners

- Business as usual meetings have been unchanged
- Daily contact between Assistant Director and Head of Public Protection (the police) if needed
- We are proactively sharing our important updates
- Shared high risk cases with police and vice versa to focus on right children
- We are sharing updates from partners with our staff
- Weekly meetings with health partners



# What next:

As the situation evolves we must continue working in an agile and responsive way

- **Seeing increasing demand: both referrals-which have remained high over the summer period and are likely to increase as the schools return and for new placements for children coming into care**
- 90-95% of visits now face to face
- Re-establishing family time (contact) for children in care and their families, safely re-opening 'Covid Safe' Family Centre's when and where appropriate.
- Reviewing building use-incremental increase based on maintaining social distancing, consideration of rotas for staff
- Reporting and monitoring to continue daily/weekly - an important role in assessing impact and analysing areas of need so we can deploy resources effectively
- Establishing hybrid meetings - so parents can attend in person, with virtual attendance from some partner agencies





Thank you  
and  
any questions



# Education and Inclusion

Brian Pope

# Education update

Schools and colleges have worked hard over the summer to implement the DfE / PHE re-opening guidance

Focus on hygiene advice, creating separate bubbles, one way systems, staggered starts, finishes and breaks

Carefully prepared induction lessons, focusing on well-being, assessing previous learning but also getting back to teaching the curriculum

Normal pattern of re-opening at the start of autumn term. High attendance rates so far - 91% in primary compared to 86% nationally and 92% in secondary compared to 88% nationally.



# GCSE and A Levels

Well documented, last minute changes to grading system

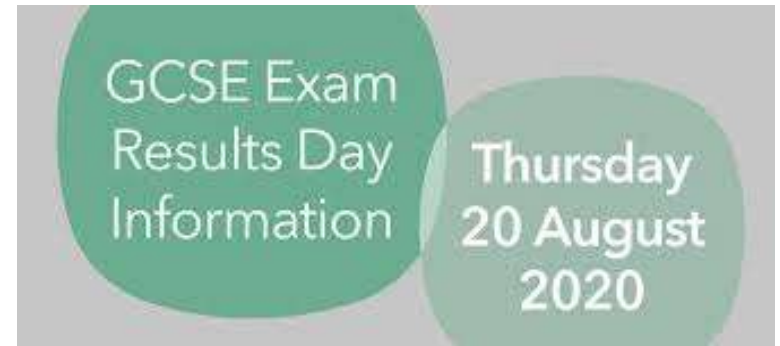
Education leaders and the Local Authority focused on students and future education pathways

Careers Service was open, guiding students and parents

Schools/colleges worked hard to ensure students were well supported

Post 16 and Post 18 pathways secure

Working on September guarantee – low NEET figures



# Positive case management

National DfE helpline set up for schools and colleges to report positive cases

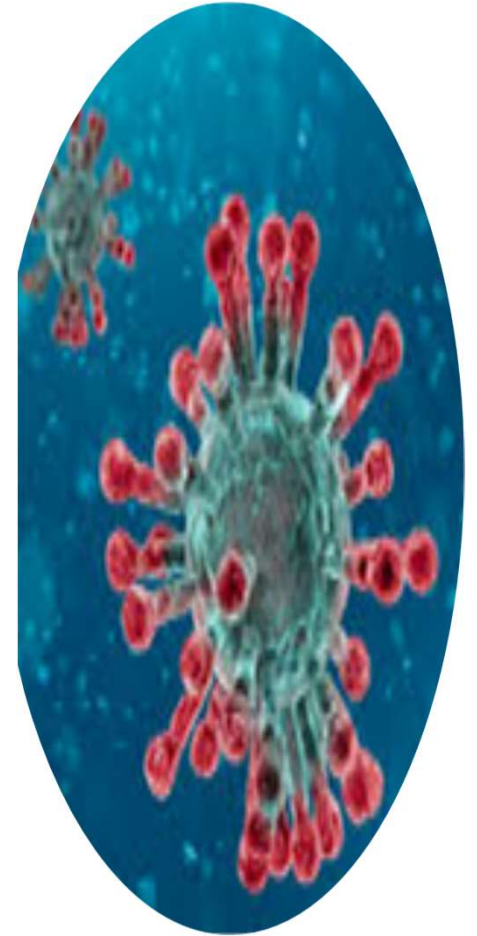
Averaging 6 positive cases each week currently – both staff and students

School improvement team are working closely with headteachers to support in the event of a positive case

Media team supporting schools with communication to parents and handling press enquiries

Public health team working very closely with Children's Services to ensure alignment of advice

Preparing to switch to remote learning when local outbreaks occur and promotion of evidence based, remote learning strategies. DfE laptops within 2 days





# What next:

Regular contact with school leaders, services back out in schools

Relentless focus on vulnerable students – persistent absence

Promotion of evidenced based, catch up strategies and recovery curriculum

Roll out of well-being programme



Thank you  
and  
any questions



# Access, Resources and Business Development

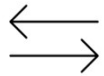
Suzanne Smith



# HTST update

- Government guidance received 11 August for school return on 4 September
- £1.1M additional funding to support increased home to school transport costs
- Transport organised for 13,000 eligible children
- Over 4,000 college students brought into scope of transport planning & commissioning
- No social distancing but system of controls in place
- Daily planning across HtST, School Improvement and ETE
- Rapid response to changes and flexibility to commission additional transport where needed
- Spot checking risk assessments and physical inspections of arrangements

# HTST update



383 'double runs' agreed



221 parental mileage allowances agreed



15 school special services in place from public bus operators



Six colleges financially supported with directly commissioned transport though funding of over £336k



Working with DfE and DfT to forecast costs for second half of Autumn term



# Early Years update

- No sufficiency issues over the summer
- 99% of group settings open. Attendance at highest levels since lockdown with over 12,500 accessing childcare
- Autumn term funding position confirmed, advance payment made to support cashflow
- Eight early years settings closed over the summer - no significant sufficiency issues arise from these closures
- Anecdotal feedback from some providers that attendance and take up for the autumn term is positive
- Support offer to early years settings is being further enhanced through online training and resources together with seminars and surgery options to the sector
- Out of school childcare still is an area of some concern with a few closing or not able to operate. Some schools have set up to deliver direct provision or make temporary offers to third party providers



Thank you  
and  
any questions

