

HAMPSHIRE COUNTY COUNCIL

Decision Report

Decision Maker:	Executive Member for Environment and Transport
Date:	14 November 2017
Title:	Land surplus to requirements between Warsash Road, Schooners Way and Dibles Road, Warsash
Report From:	Director of Economy, Transport and Environment

Contact name: Phil Yexley

Tel: 01962 846956

Email: phil.yexley@hants.gov.uk

1. Executive Summary

- 1.1 The purpose of this paper is to seek approval for the land between Warsash Road, Schooners Way and Dibles Road, Warsash, as coloured red on the attached plan, (“the Land” and “the Plan”) to be declared surplus to highway requirements.
- 1.2 This paper seeks to:
- explain the reason for the County Council’s ownership of the Land;
 - describe the proposed direction of the scheme for which the Land was originally acquired; and
 - confirm the Land is surplus to highway requirements.

2. Contextual information

- 2.1 The Land, the former Warsash Motors site, was acquired in 2005 for the construction of the Fareham Western Wards, Western Distributor Phase 3. However the two parcels of land concerned were not used for the scheme and remain as severed land.
- 2.2 The Land does not form part of the existing operational highway, is not needed for future highway purposes and no highway rights exist.
- 2.3 The local member, Councillor Evans, has been notified and made aware of the recommendation made in this report.

3. Finance

- 3.1. Financial details will be provided in full at the appropriate Executive Member for Policy and Resources Decision Day, as and when recommendations for disposal of the Land are presented.

4. Future direction

- 4.1. From a highways and transport operational perspective it has been confirmed the Land is surplus to highway requirements.

5. Recommendation

- 5.1. That the Executive Member for Environment and Transport declares the land between Warsash Road, Schooners Way and Dibles Road in Warsash, as coloured red on the attached plan, (“the Land” and “the Plan”) surplus to highway requirements.

CORPORATE OR LEGAL INFORMATION:**Links to the Strategic Plan**

Hampshire maintains strong and sustainable economic growth and prosperity:	no
People in Hampshire live safe, healthy and independent lives:	no
People in Hampshire enjoy a rich and diverse environment:	no
People in Hampshire enjoy being part of strong, inclusive communities:	no
OR	
This proposal does not link to the Strategic Plan but, nevertheless, requires a decision because:	
<p>Declaring the land surplus to requirements may subsequently allow disposal of the land, rationalising the County Council's asset holding and where appropriate, releasing the monetary value for use in its services.</p>	

Section 100 D - Local Government Act 1972 - background documents

The following documents discuss facts or matters on which this report, or an important part of it, is based and have been relied upon to a material extent in the preparation of this report. (NB: the list excludes published works and any documents which disclose exempt or confidential information as defined in the Act.)

Document

Location

None

IMPACT ASSESSMENTS:

1. Equality Duty

1.1. The County Council has a duty under Section 149 of the Equality Act 2010 ('the Act') to have due regard in the exercise of its functions to the need to:

- Eliminate discrimination, harassment and victimisation and any other conduct prohibited under the Act;
- Advance equality of opportunity between persons who share a relevant protected characteristic (age, disability, gender reassignment, pregnancy and maternity, race, religion or belief, gender and sexual orientation) and those who do not share it;
- Foster good relations between persons who share a relevant protected characteristic and persons who do not share it.

Due regard in this context involves having due regard in particular to:

- a) The need to remove or minimise disadvantages suffered by persons sharing a relevant characteristic connected to that characteristic;
- b) Take steps to meet the needs of persons sharing a relevant protected characteristic different from the needs of persons who do not share it;
- c) Encourage persons sharing a relevant protected characteristic to participate in public life or in any other activity which participation by such persons is disproportionately low.

1.2. Equalities Impact Assessment:

An Equalities Impact Assessment has been carried out specifically for this proposal (Ref: EIA 1109713). The proposal is to declare that this property is surplus to highway requirements. It is considered that this decision would have no impact on any groups with protected characteristics.

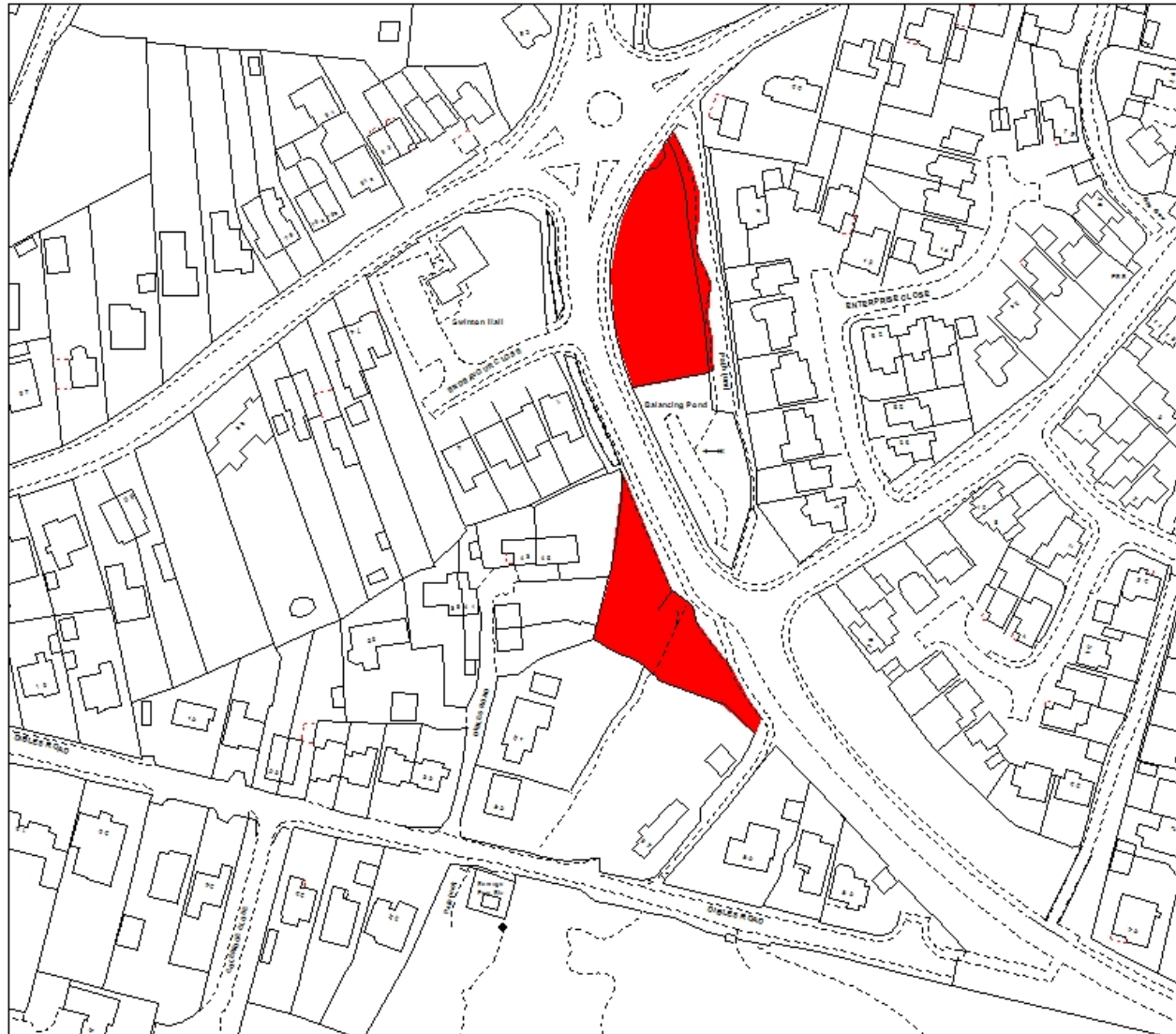
2. Impact on Crime and Disorder:

2.1. No impact.

3. Climate Change:

- a) How does what is being proposed impact on our carbon footprint / energy consumption? No impact.
- b) How does what is being proposed consider the need to adapt to climate change, and be resilient to its longer term impacts? No impact.

The Plan



Land at Warsash Road and
Dibles Road, Warsash

The Land



© Crown Copyright 2016 HCC 100019180
Reproduced from the Ordnance Survey
map with the permission of the controller
of Her Majesty's Stationery Office